

CREATING ACCESSIBLE DATA VISUALIZATIONS

Presented by
Science Gallery Atlanta
for the Georgia Tech Arts Festival

SCIENCE
GALLERY
ATLANTA

EMORY
UNIVERSITY

JUSTICE
03.30.2023 - 09.30.2023

SCIENCE GALLERY

JUSTICE
03.30.2023 - 09.30.2023



STRIVE FOR OPEN SCIENCE:

A DATA VISUALIZATION

COMPETITION





EMORY
UNIVERSITY

STRIVE FOR
OPEN SCIENCE:
A DATA
VISUALIZATION
COMPETITION

3/27 - COMPETITION OPENS &
DATASET ANNOUNCED

4/5 - CREATING ACCESSIBLE DATA
VISUALIZATIONS WORKSHOP

4/17 - COMPETITION CLOSES

4/20 - FINALISTS ANNOUNCED

4/21 - COMPETITION SHOWCASE AT
THE ARTS PLAZA POP-UP

4/24 - WINNER IS ANNOUNCED



PRESENTED IN
PARTNERSHIP WITH



TECH ARTS
FESTIVAL
March 27 - April 21

@GaTechArts   



2023 IS THE YEAR
OF OPEN SCIENCE



“The principle and practice of making research products and processes available to all, while respecting diverse cultures, maintaining security and privacy, and fostering collaborations, reproducibility, and equity.”

- (open.science.gov)



“The principle and practice of making research products and processes **available to all**, while respecting diverse cultures, maintaining security and privacy, and fostering collaborations, reproducibility, and **equity**.”

- (open.science.gov)



DIGITAL

ACCESSIBILITY



“Digital accessibility is the inclusive practice of ensuring that everyone has equal access to information, functionality, and experience on digital platforms. That means no barriers prevent interaction with, or access to, digital products by people with any type of disabilities or traits commonly linked to disabilities.”

- (Teixeira, UX Collective, 2021)



THE INTERNET HAS BECOME ESSENTIAL

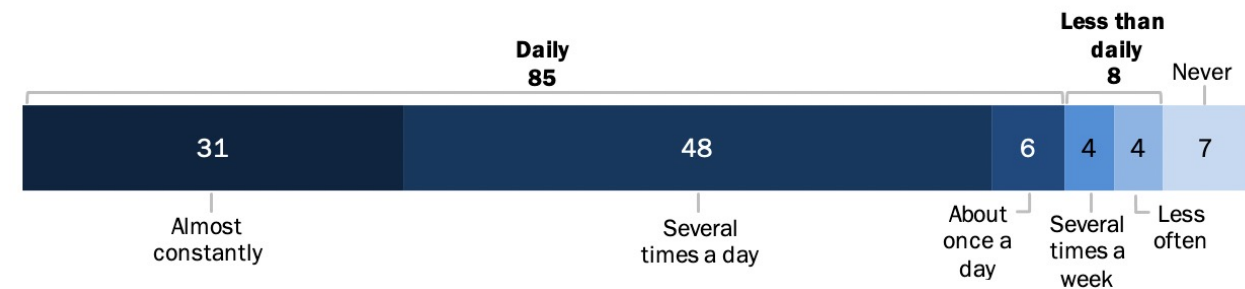
- ~ 86% of companies do interviews over video calls (Gartner Research, 2023)
- ~ 37% of adults used telemedicine in 2021 (NCHS, 2022)

Not to Mention...

- Its use for work
- Its use for entertainment
- Its use for social connection
- Its use for education**

More than eight-in-ten U.S. adults go online at least daily

% of U.S. adults who say they go online ...



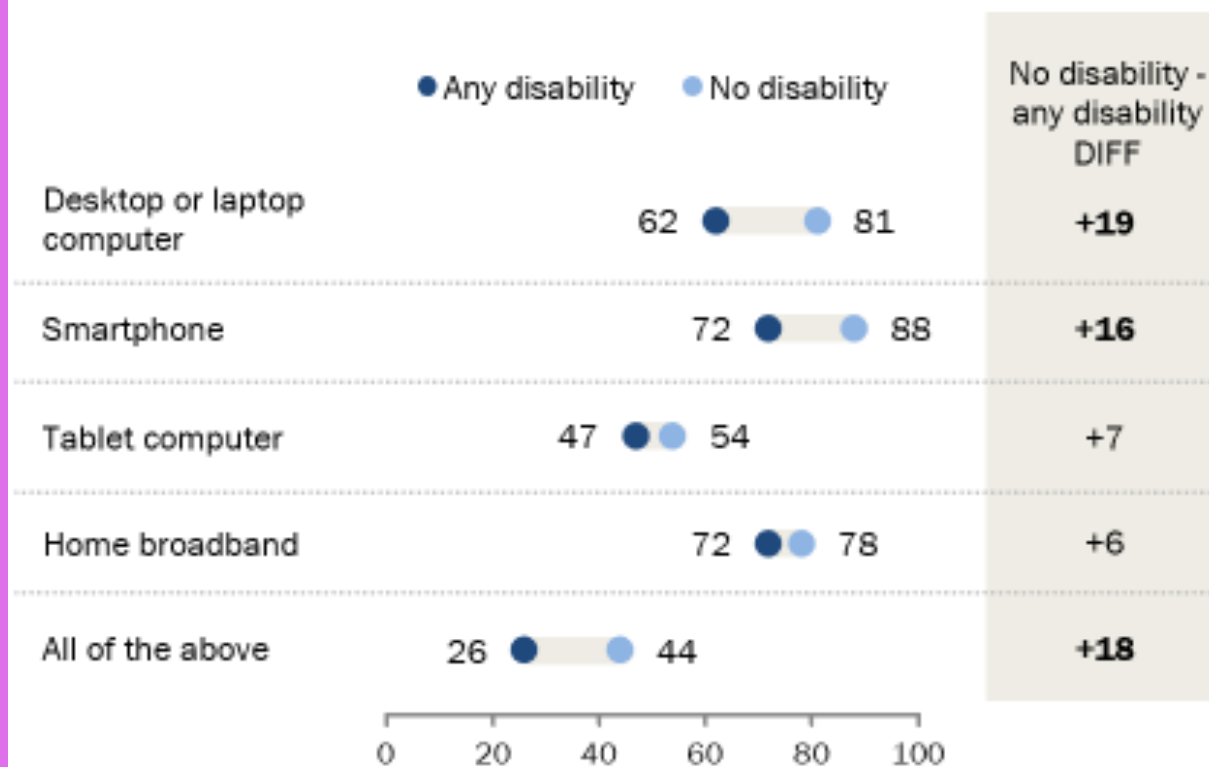
Note: Respondents who did not give an answer are not shown.
Source: Survey of U.S. adults conducted Jan. 25-Feb. 8, 2021.

PEW RESEARCH CENTER



Americans with a disability are less likely than those without one to have traditional computer, smartphone

% of U.S. adults who say they have the following



Note: Statistically significant differences in **bold**. The difference values shown are based on subtracting the rounded values in the chart. Respondents who did not give an answer are not shown.

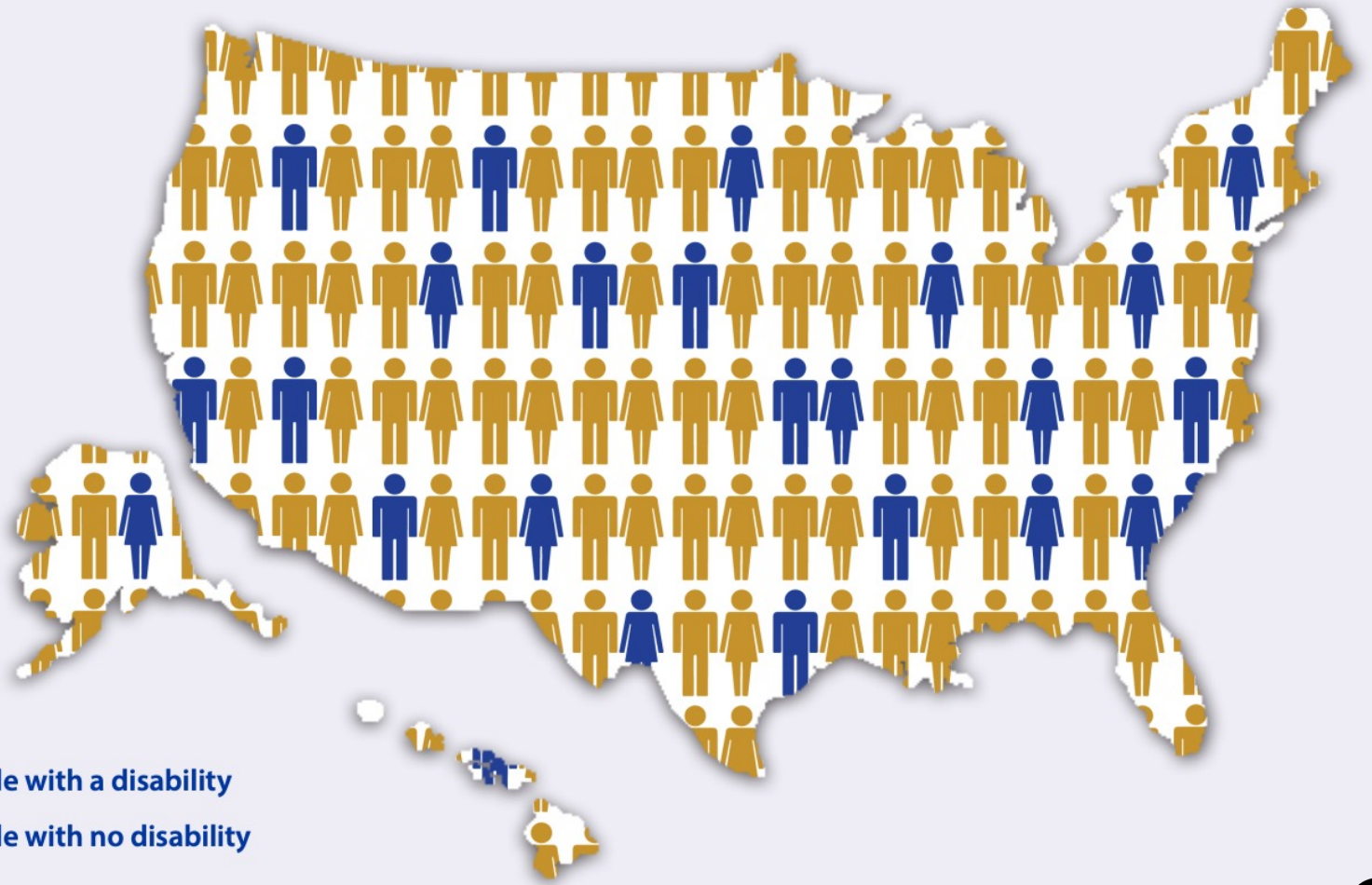
Source: Survey of U.S. adults conducted Jan. 25-Feb. 8, 2021.

PEW RESEARCH CENTER

THE DATA



Up to **1 in 4** adults in the United States
(26%) have some type of disability



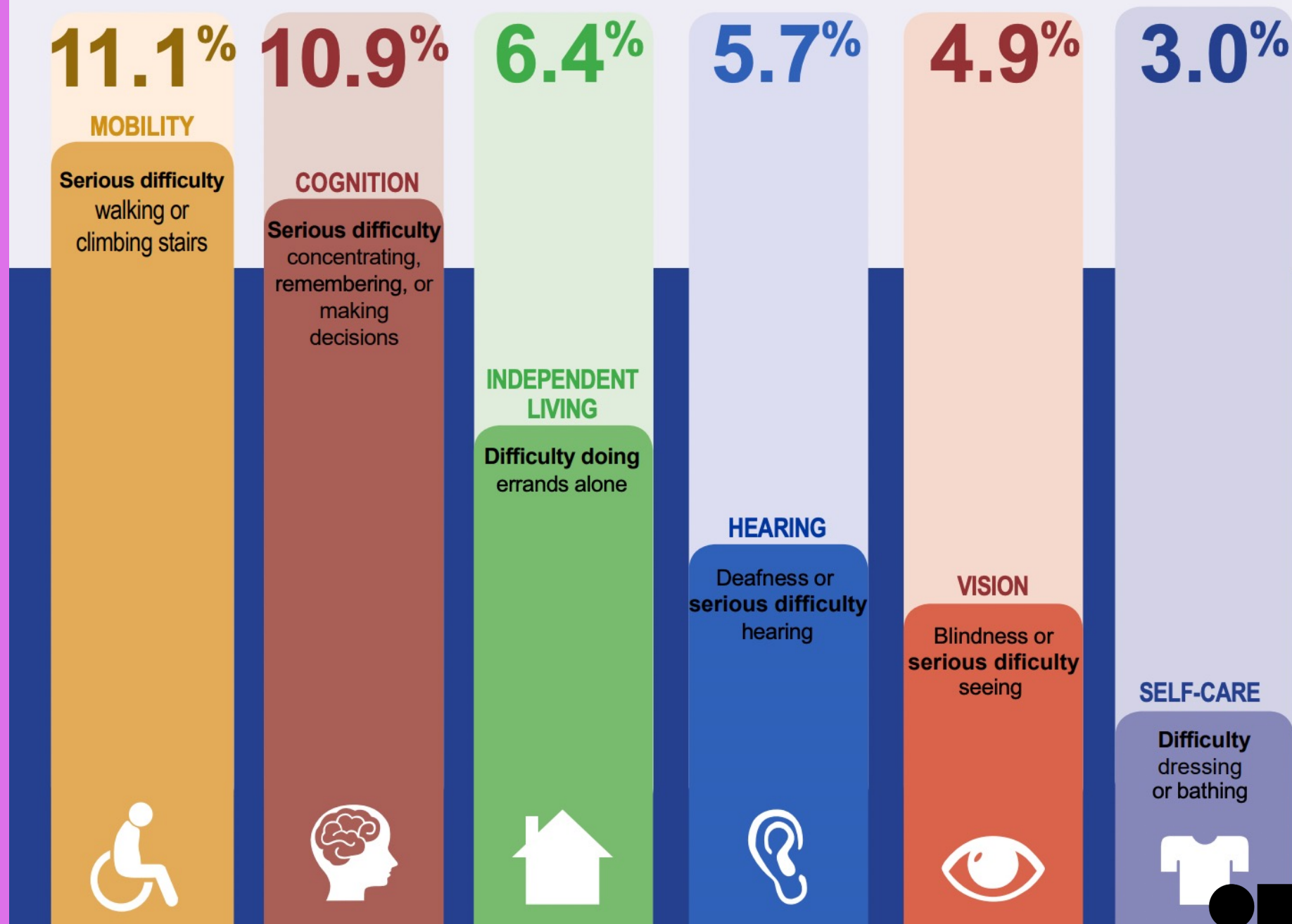
THE DATA

CDC. Disability & Health Data System. May 2022



THE DATA

CDC. Disability & Health Data System. May 2022



SOME EXAMPLES OF DIGITAL BARRIERS

For people with Auditory Disabilities

- Audio content without captions, transcripts, or volume controls

For people with Cognitive Disabilities

- Complex page layout, navigation, and overstimulating content that can't be suppressed.

For people with Physical Disabilities

- Pages without full keyboard support

For people with Visual Disabilities

- Images without text alternatives



HOW CAN WE MAKE
INFORMATION MORE
ACCESSIBLE?



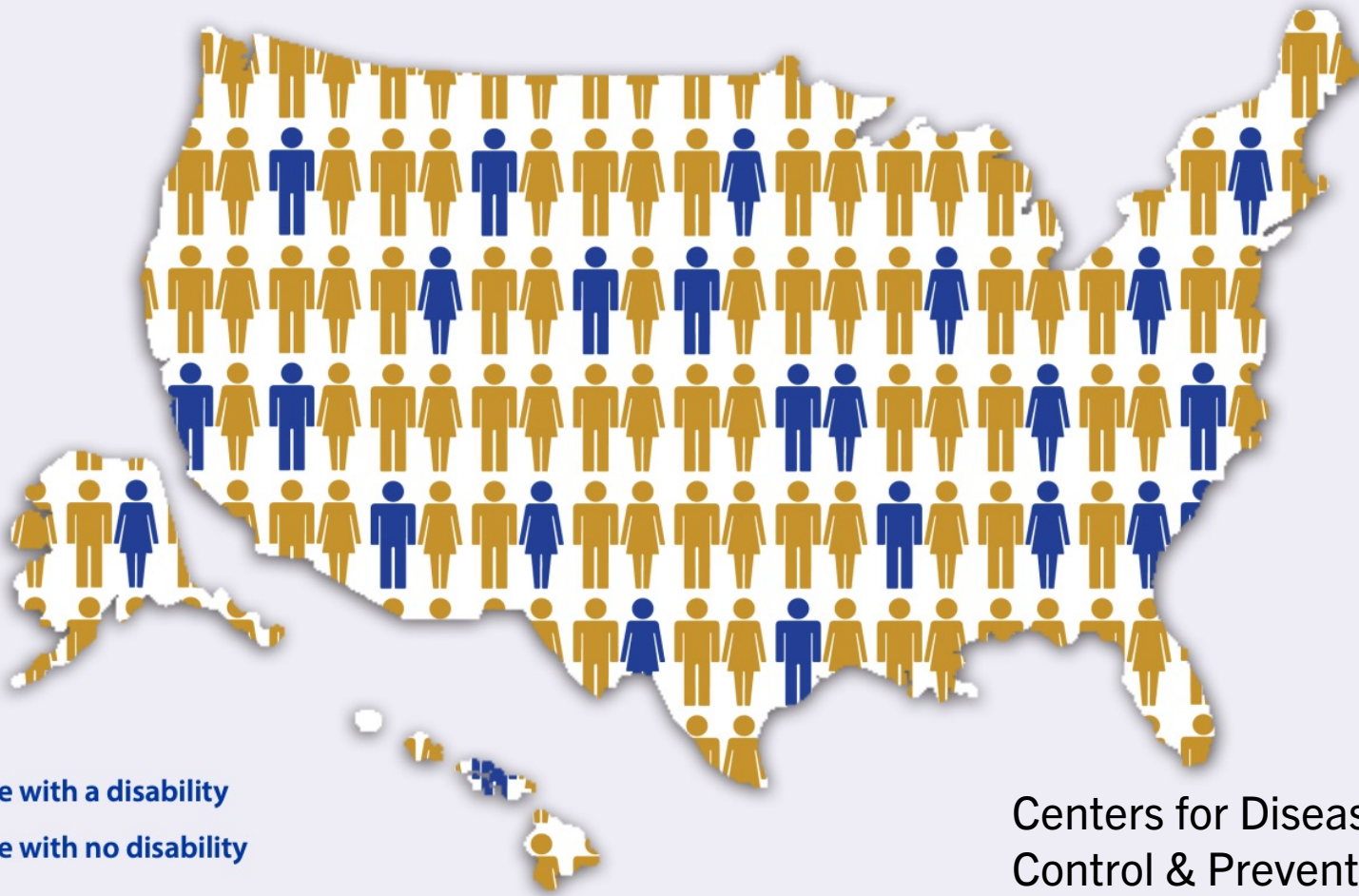
DATA VISUALIZATIONS!





**WHAT MAKES A 'GOOD'
DATA VISUALIZATION?**



Up to **1 in 4** adults in the United States
(26%) have some type of disability

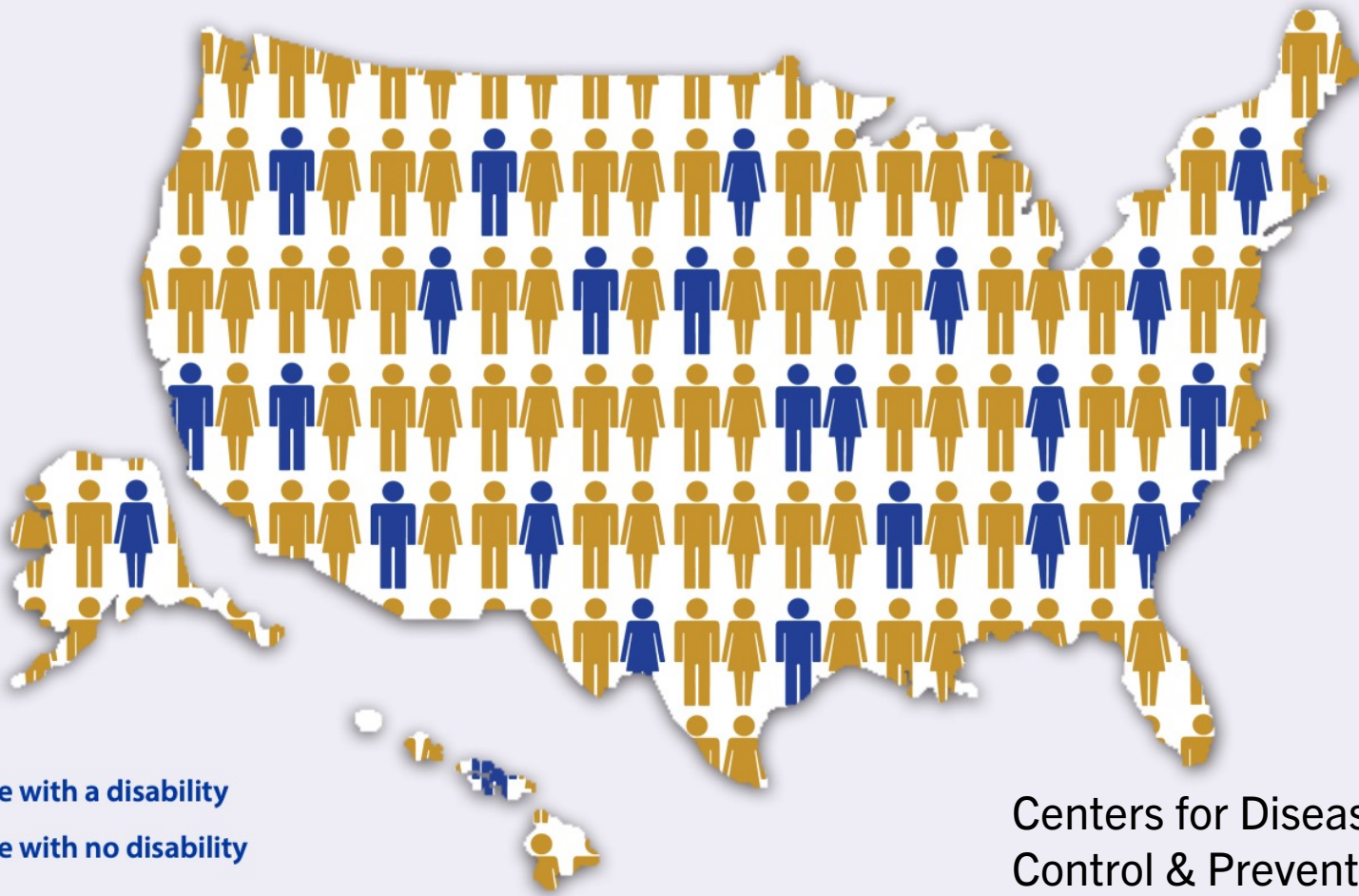




 People with a disability
 People with no disability

Centers for Disease
Control & Prevention.
May 2022



Up to **1 in 4** adults in the United States have some type of disability
(26%)



 People with a disability
 People with no disability

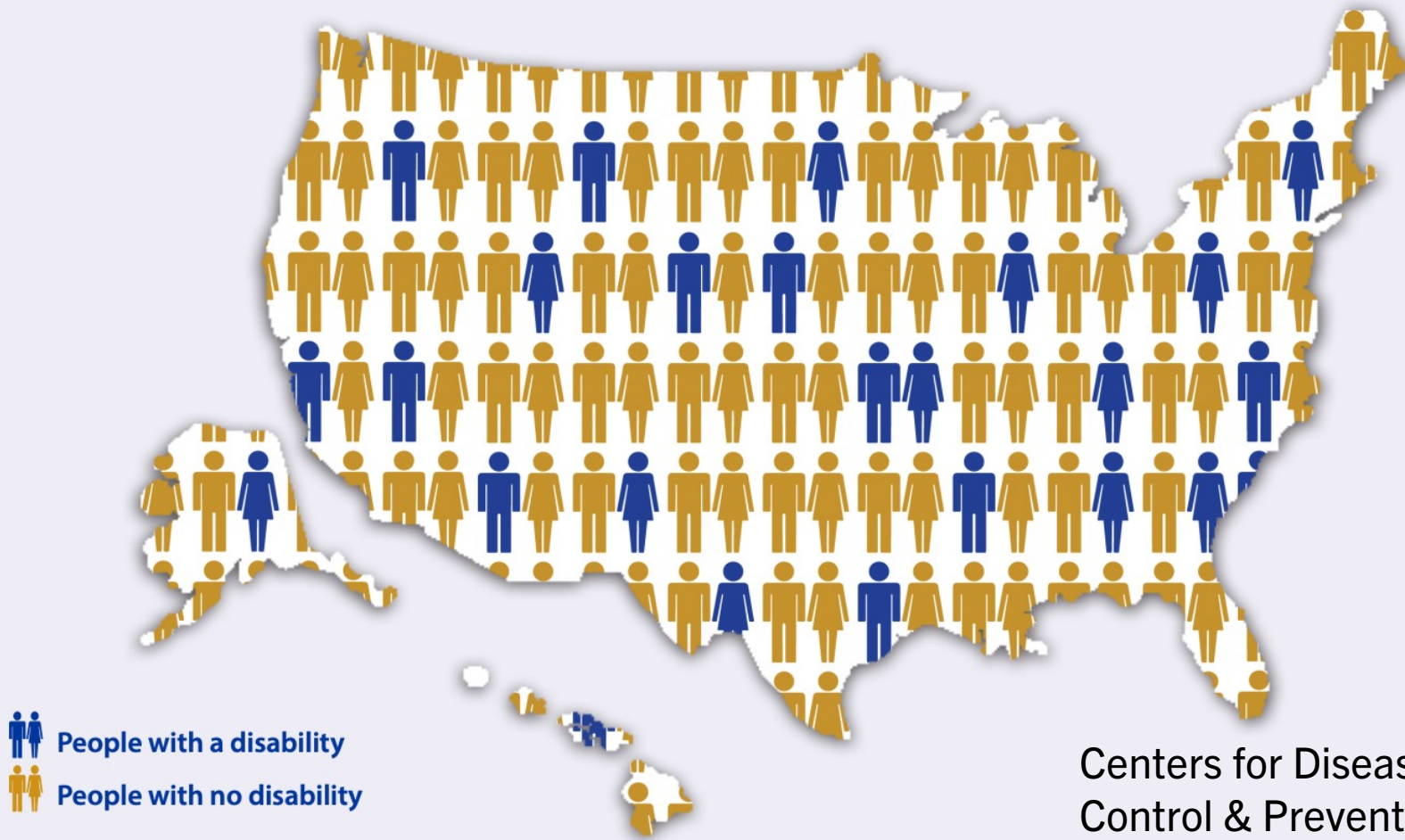
Centers for Disease
Control & Prevention.
May 2022

Alt-Text Auto
Generated:

“A picture
containing table”



Up to **1 in 4** adults in the United States have some type of disability
(26%)



Centers for Disease Control & Prevention.
May 2022

Alt-Text Auto Generated:

“A picture containing table”

Example of Good Alt-Text:

A figurative representation of the percent of the American population with a disability. Outline of the map of the United States, filled in with icons of people. Icons depicting the population of people with a disability are blue while icons depicting people with no disability are orange. One-fourth of the icons are blue. Graphic Title: “Up to 1 in 4 (26%) adults in the United States have some type of disability.”



ALT - TEXT

*“It is read by screen readers in place of images allowing the **content** and **function** of the image to be accessible to those with visual or certain cognitive disabilities.*

It is displayed in place of the image in browsers if the image file is not loaded or when the user has chosen not to view images.” ([WebAIM](#))

Writing Alt – Text for Data Visualizations:

“**[Chart type]** of **[type of data]** where **[reason for including chart]**”

*Good practice to include a link to the data source

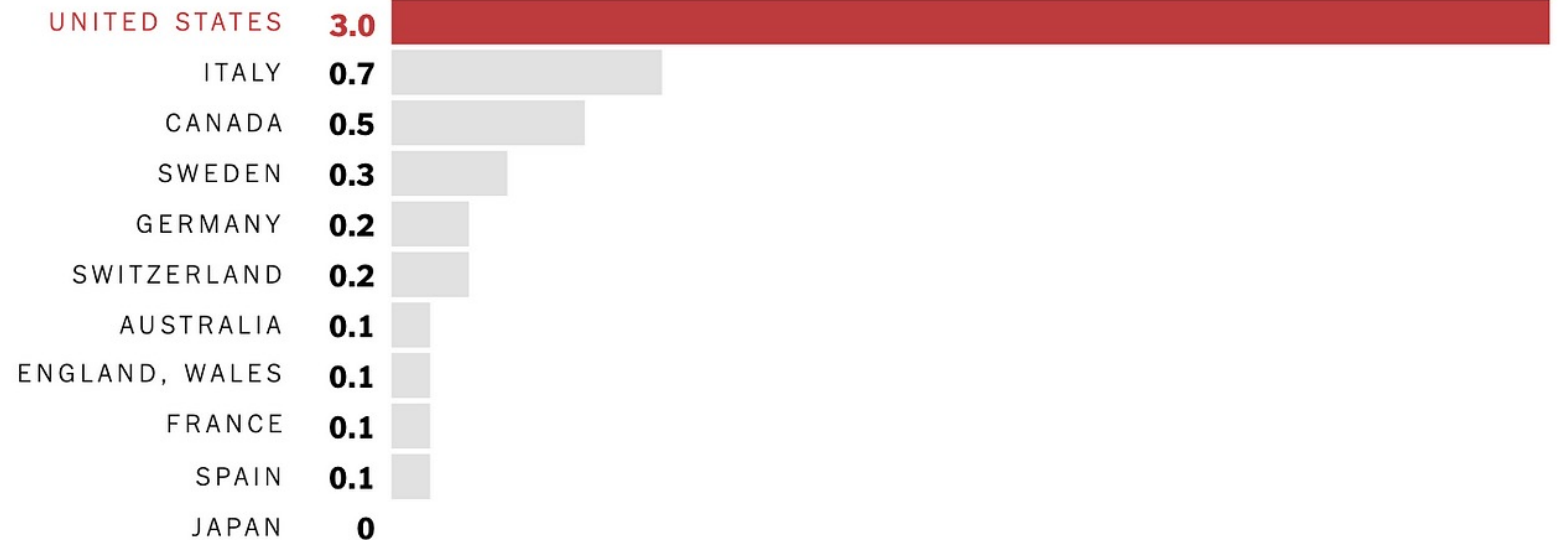


EXAMPLE OF ALT – TEXT

(Cesal, 2020)

Gun murders per 100,000 people

America's private arsenal is six times as lethal as Canada's, and 30 times worse than Australia's.



The New York Times | Sources: United Nations Office on Drugs and Crime (gun murders); Small Arms Survey (guns per 100 people) | Murder data for U.S., Canada, Sweden, Switzerland, Australia and Spain from 2015 and latest available for other countries; 2007 data for guns per 100 people.

alt= "Bar chart of gun murders per 100,000 people where America's murder rate is 6 times worse than Canada, and 30 times Australia"



**WHAT MAKES A 'BAD'
DATA VISUALIZATION?**



11.1%

MOBILITY

Serious difficulty walking or climbing stairs



10.9%

COGNITION

Serious difficulty concentrating, remembering, or making decisions



6.4%

INDEPENDENT LIVING

Difficulty doing errands alone



5.7%

HEARING

Deafness or serious difficulty hearing



4.9%

VISION

Blindness or serious difficulty seeing

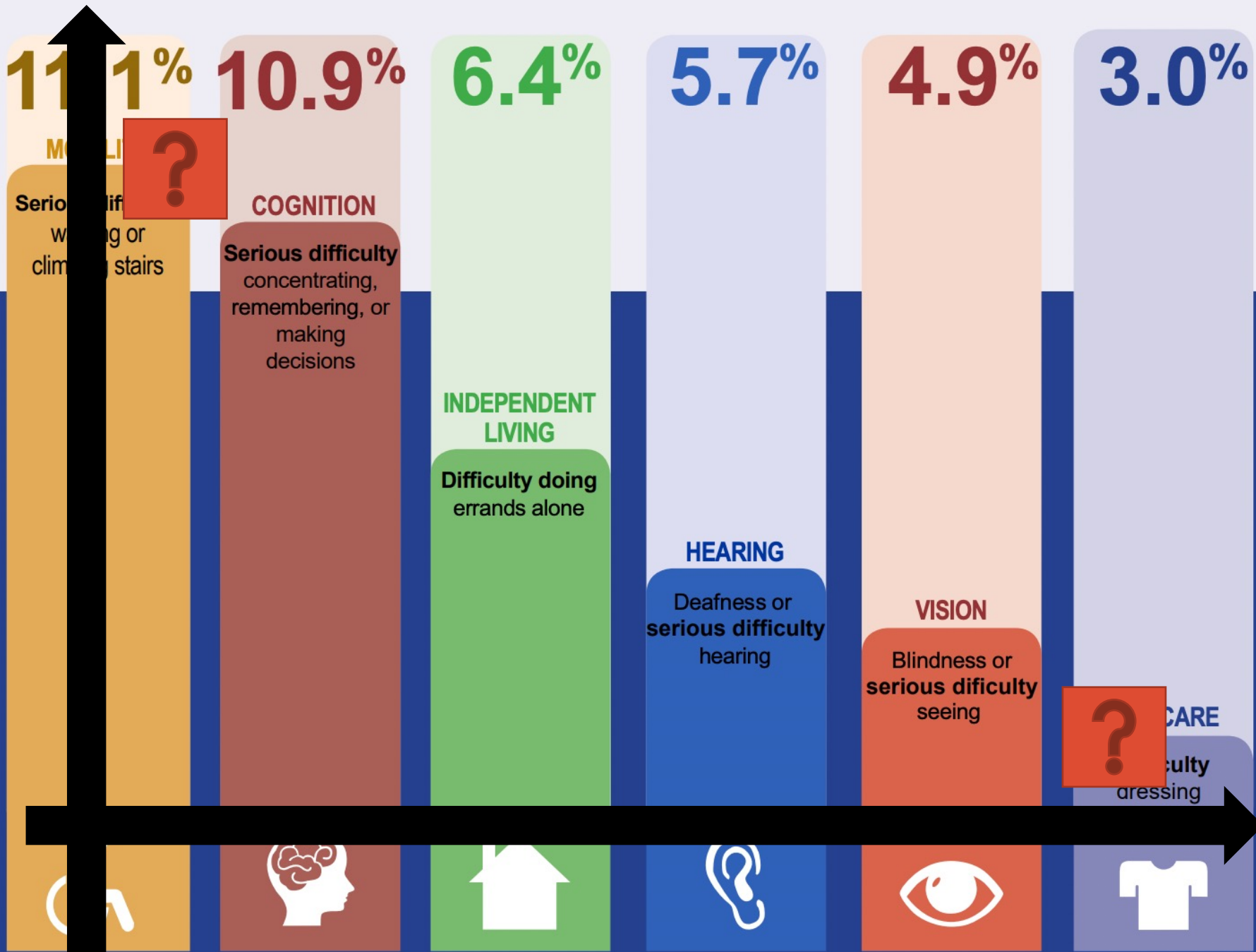


3.0%

SELF-CARE

Difficulty dressing or bathing





11.1%

MOBILITY

Serious difficulty walking or climbing stairs



10.9%

COGNITION

Serious difficulty concentrating, remembering, or making decisions



6.4%

INDEPENDENT LIVING

Difficulty doing errands alone



5.7%

HEARING

Deafness or serious difficulty hearing



4.9%

VISION

Blindness or serious difficulty seeing



3.0%

SELF-CARE

Difficulty dressing or bathing



COLOR,
CONTRAST
Typography



COLOR CONTRAST

contrast ratio



To Pass WCAG 2.0 level AA:

- 4.5:1 for normal text
- 3:1 for large text.

To Pass WCAG Level AAA:

- 7:1 for normal text
- 4.5:1 for large text.

contrast ratio



Large text is defined as:

- 14 pt **bold**
- 18 point or larger.



LET'S DISSECT SOME

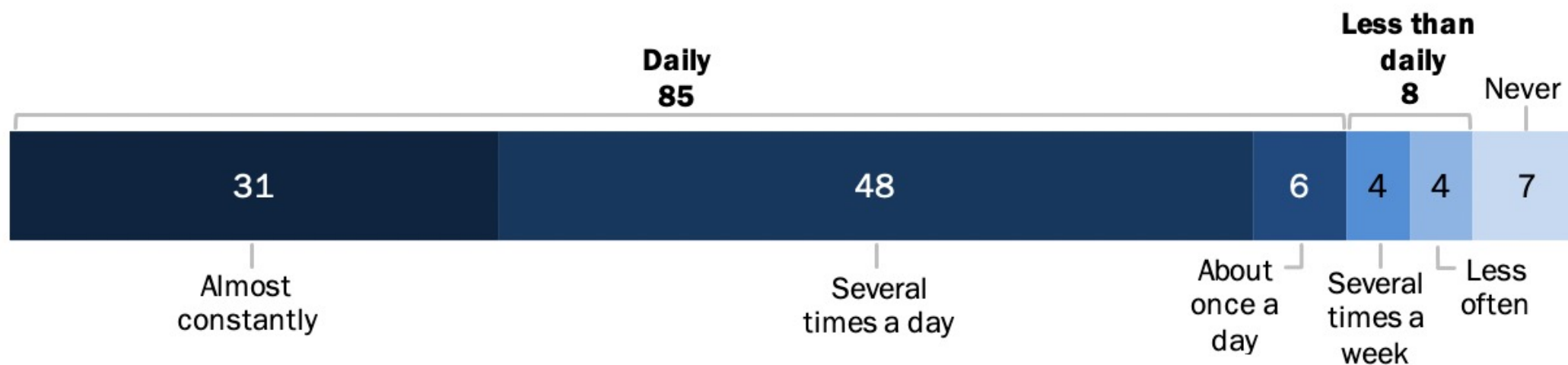
OTHER DATA

VISUALIZATIONS



More than eight-in-ten U.S. adults go online at least daily

% of U.S. adults who say they go online ...



Note: Respondents who did not give an answer are not shown.

Source: Survey of U.S. adults conducted Jan. 25-Feb. 8, 2021.

PEW RESEARCH CENTER



Regardless of age, disabled Americans are adopting tech at lower rates

% of U.S. adults who say they have ...

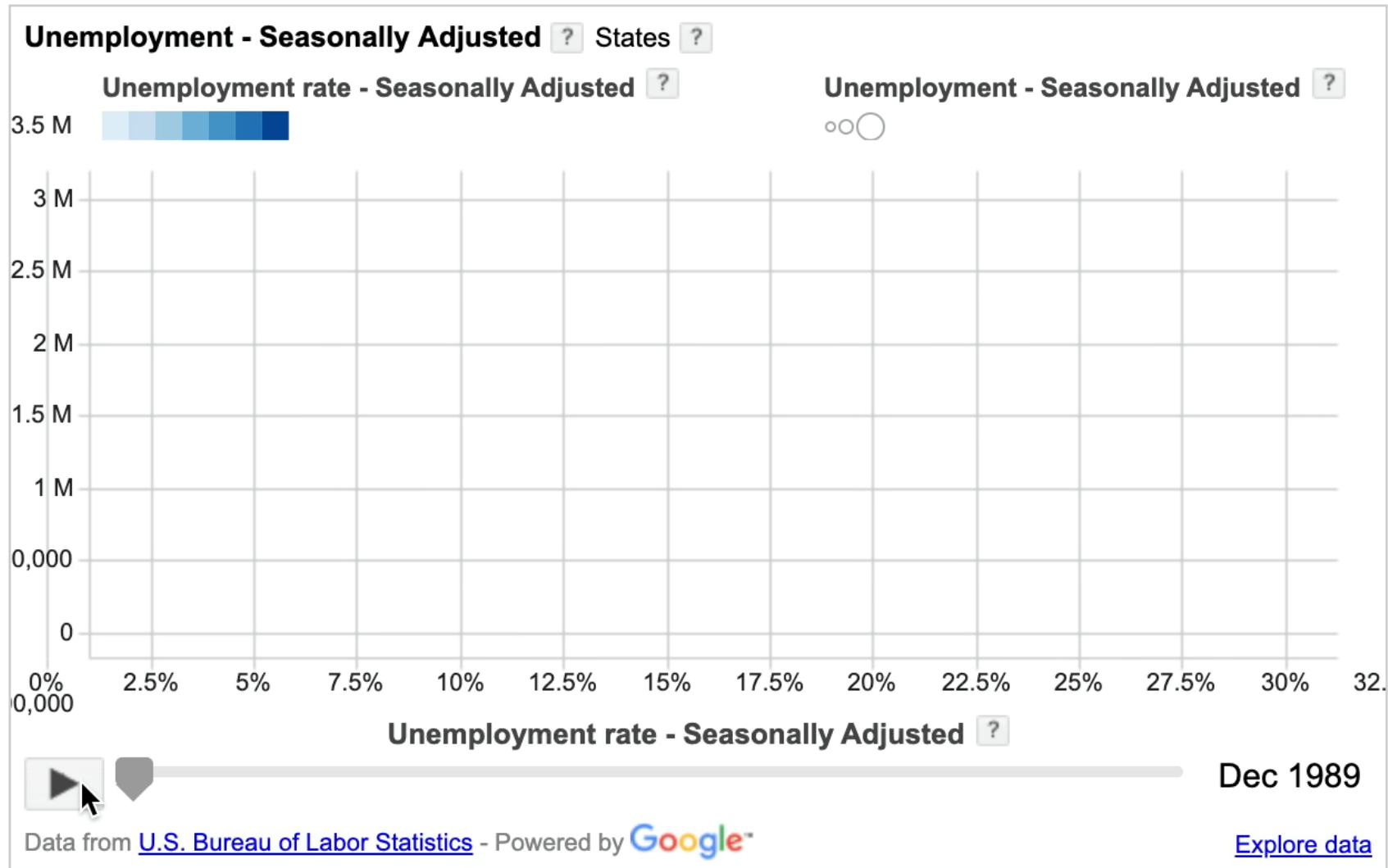
	Ages 65+			Ages 18-64		
	Any disability	No disability	Diff	Any disability	No disability	Diff
Desktop/laptop computer	50	66	-16	67	84	-17
Smartphone	32	45	-13	70	87	-17
Home broadband	36	57	-21	66	80	-14
Tablet	21	36	-15	44	57	-13

Source: Survey conducted Sept. 29-Nov. 6, 2016.

PEW RESEARCH CENTER

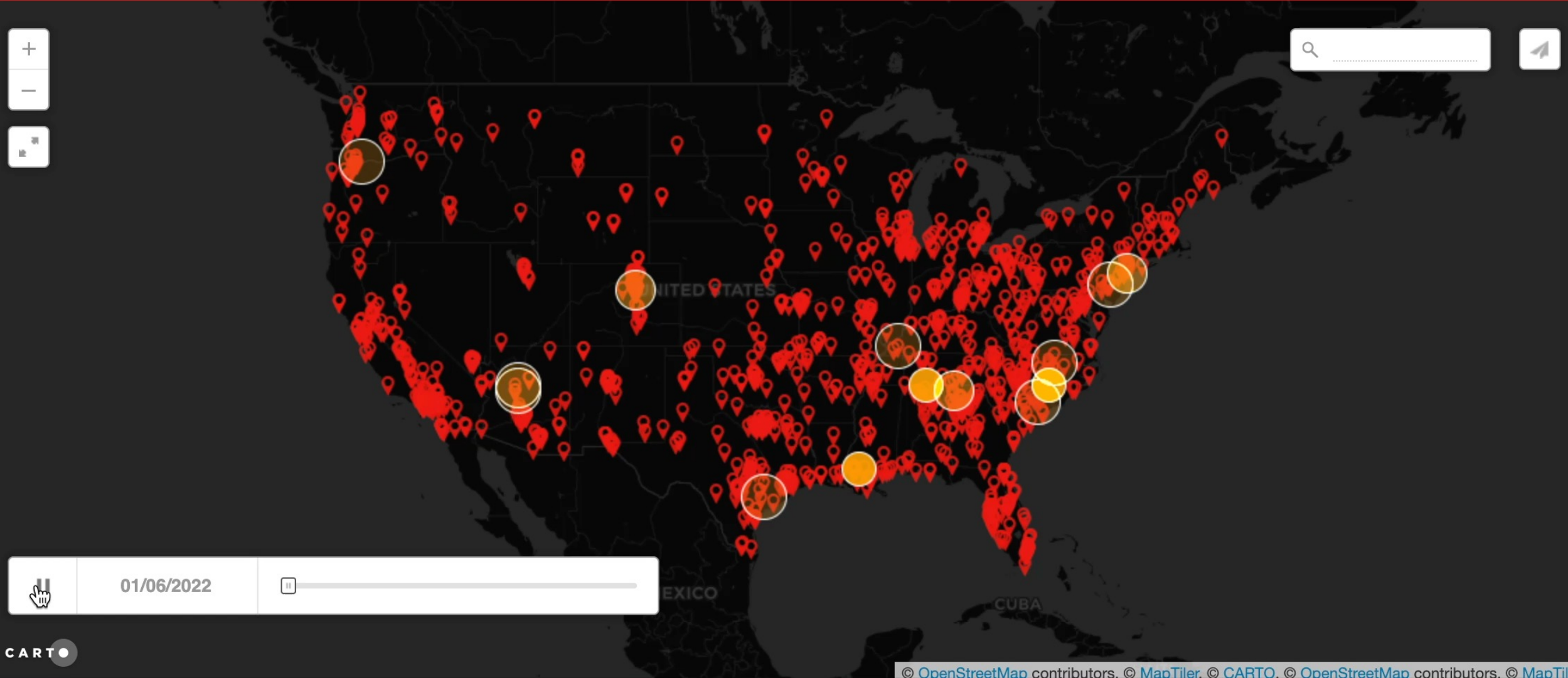


Overall U.S. Unemployment by state since 2008



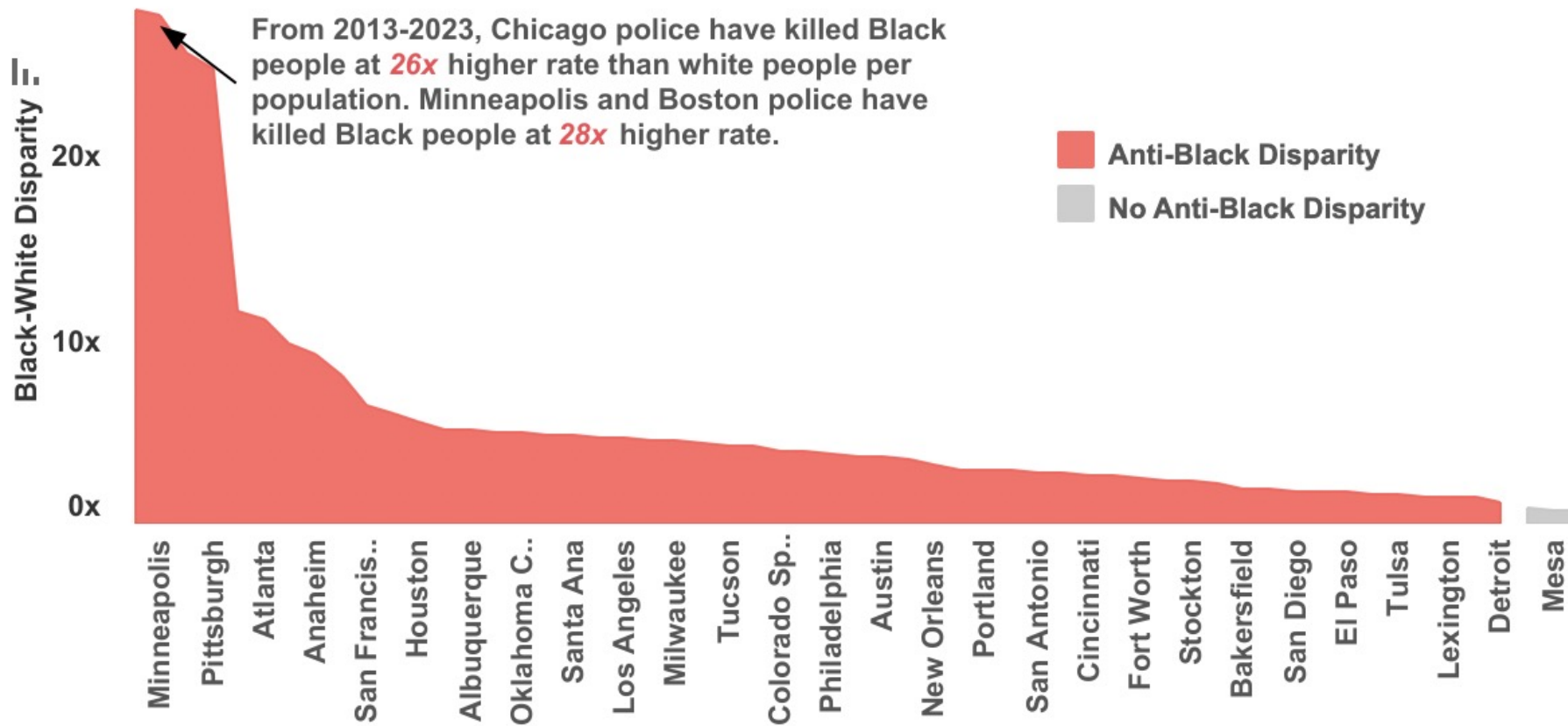
(mappingpoliceviolence.us)

Police have killed 276 people in 2023.



95% of America's major city police departments kill Black people at higher rates than white people.

Black-White Disparity in Cities over 300,000 Residents, 2013-2023.



(mappingpoliceviolence.us)



There is no accountability

98.1% of killings by police from 2013-2022 have not resulted in officers being charged with a crime.

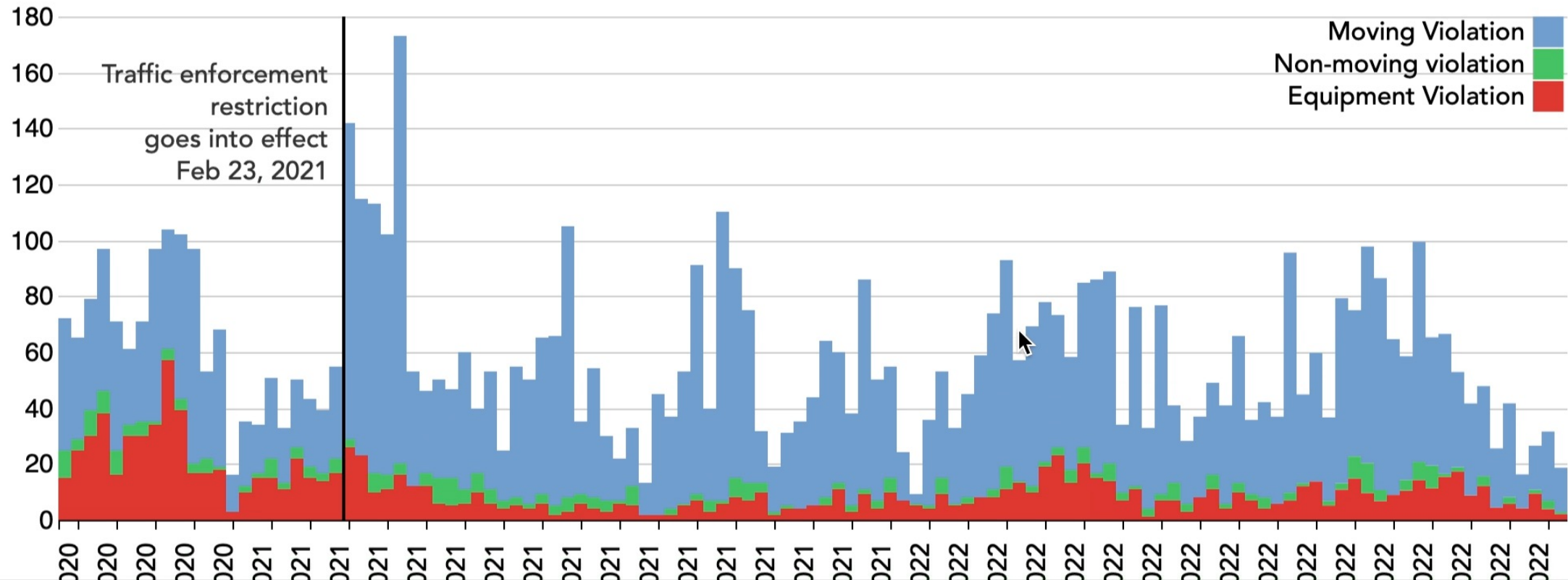


■ No Criminal Charges ■ Officer(s) Charged ■ Officer(s) Convicted





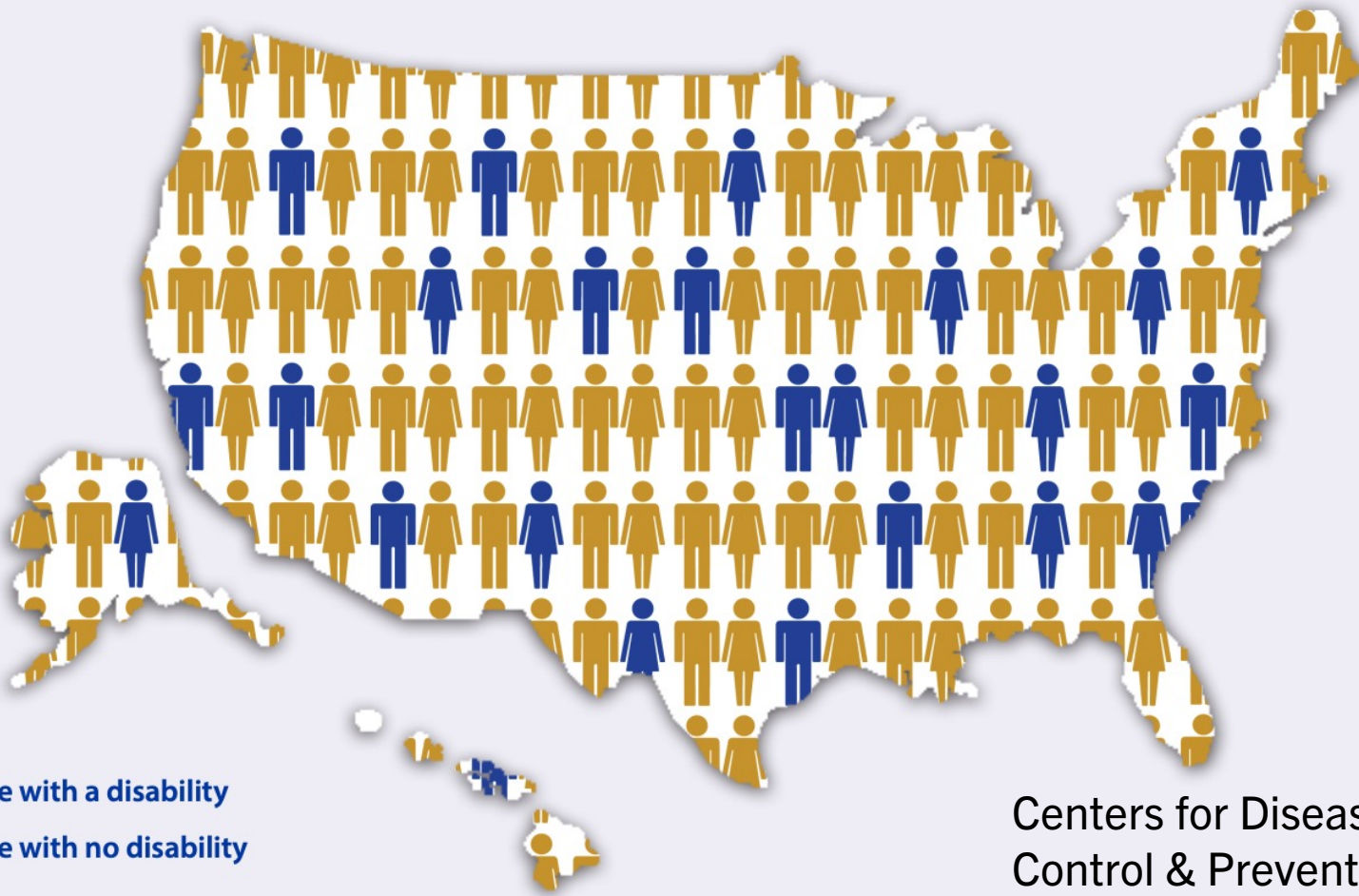
In February 2021, the City of Berkeley enacted a new policy meant to restrict police from enforcing some traffic violations, including equipment violations like expired tags or tinted windows. While stops for equipment violations have declined since then, overall police traffic enforcement has not reduced substantially – indicating the need for more expansive restrictions on police traffic enforcement.



WHAT ARE WE LOOKING FOR
WITH THE STRIVE FOR OPEN
SCIENCE COMPETITION?



Up to **1 in 4** adults in the United States
(26%) have some type of disability



Centers for Disease
Control & Prevention.
May 2022



THINGS TO CONSIDER WHEN MAKING YOUR DATA VISUALIZATIONS

- Accessibility of Information (Based on W3C Standards)
 - Multisensory delivery of information (i.e. captions for audio & alt-text for images)
 - Takeaway Title (provide context of the data's important points to assist with reading)
 - Check type & color contrast
- Tell a Story & Convey the Emotional Weight Behind the Data (be creative!)
- Ensure the Data Displayed has Meaning
 - Guide the user to the key point
- Let the Data Shine
 - streamline the graphic's elements that don't add to the communication of information



COMPETITION

LOGISTICS



THE DATASET

COVID-19 Case Surveillance Data with Geography

This case surveillance public use dataset has 19 elements for all COVID-19 cases shared with CDC and includes demographics, geography (county and state of residence), any exposure history, disease severity indicators and outcomes, and presence of any underlying medical conditions and risk behaviors.



STEPS



1. Register to be apart of the competition
2. **Use the provided dataset** to create an original data visualization that emphasizes accessibility, creativity, emotional impact, and information content.
3. **Submit your data visualization** before the competition closes on Monday, April 17th.



PRIZES



Chosen finalists, selected by an expert panel of judges, will present their visualizations as a part of the Tech Arts Festival set design. At the block party the community will vote on which submission takes first-place, with the winner getting the opportunity to present their work at a Science Gallery Atlanta public program (program details to be created in conjunction with the winner)!



RESOURCES

- [Getting Started with Tableau](#)
- [Designing Charts - Principles Every Designer Should Know](#)
- [Example Data Visualization 1](#)
- [Example Data Visualization 2](#)
- [Web Content Accessibility Checklist \(TOOL\)](#)
- [Testing for Accessible Data Visualization \(TOOL\)](#)
- [Accessible Data Visualization Resources](#)
- [Resources to Learn More About Digital Accessibility](#)
- [Web Content Accessibility Guideline \(WCAG\) Overview](#)
- [W3C: Web Accessibility Initiative](#)





ANY QUESTIONS?

Interested in learning more about Science Gallery Atlanta?

Stop by our gallery to see the current exhibition JUSTICE. Open Wed. – Sun. at Pullman Yards

Follow us on social media to stay updated on our upcoming programs

