



## Ferst Center for the Arts Technical Specifications

(Revised January 2022)

### Georgia Tech Arts Contacts:

Ferst Center for the Arts  
349 Ferst Drive NW  
Atlanta, GA 30332-0468  
Administrative Office: 404-894-2787  
Box Office: 404-894-9600  
Fax: 404-894-9864

### Space Availability and Rental Inquiries

<b>General Operations Manager</b>	Ben Dostal	404-385-2288	<a href="mailto:Ben.Dostal@arts.gatech.edu">Ben.Dostal@arts.gatech.edu</a>
-----------------------------------	------------	--------------	--

### Georgia Tech Arts Staff

<b>Director:</b>	Aaron Shackelford	404-894-9862	<a href="mailto:Aaron.Shackelford@arts.gatech.edu">Aaron.Shackelford@arts.gatech.edu</a>
<b>Assistant Director:</b>	Nathalie Matychak	404-894-9195	<a href="mailto:Nathalie.Matychak@arts.gatech.edu">Nathalie.Matychak@arts.gatech.edu</a>
<b>Production Manager:</b>	Paul Cottongim	404-385-1923	<a href="mailto:Paul.Cottongim@arts.gatech.edu">Paul.Cottongim@arts.gatech.edu</a>
<b>General Operations Manager:</b>	Ben Dostal	404-385-2288	<a href="mailto:Ben.Dostal@arts.gatech.edu">Ben.Dostal@arts.gatech.edu</a>
<b>Patron &amp; Event Services Coordinator:</b>	Andrea Mullen	404-894-9200	<a href="mailto:andrea.mullen@arts.gatech.edu">andrea.mullen@arts.gatech.edu</a>
<b>Box Office Coordinator:</b>	Holley Mitchell	404-894-2864	<a href="mailto:Holley.Mitchell@arts.gatech.edu">Holley.Mitchell@arts.gatech.edu</a>

**Space Rental Inquiries should be made online at [arts.gatech.edu/facility-rental](https://arts.gatech.edu/facility-rental)**

**The Ferst Center for the Arts** is a recently renovated 950 seat multipurpose theater (869 fixed, 64 removable in pit, plus ADA) built in the Spring of 1992 with a proscenium stage, hydraulic orchestra lift, sprung wooden stage floor, and fly tower. The lobby features a box office and a large open space well-suited to accommodate pre-and post-show audiences, and for hosting parties/events.

### Administrative Logistics

#### **Personnel and Show Call**

- All employees of Georgia Tech report directly to the appropriate Georgia Tech staff at all times and will work as Georgia Tech deems appropriate under the guidance of the Client representative
- All Ferst Center personnel will be determined by the Ferst Center's Operations Department, in conformance and dialog with the Client.

## **Front of House**

- House Opening. Notwithstanding unanticipated significant delays and problems with pre-performance technical rehearsals and associated lighting and sound checks, Georgia Tech will open the house sixty (60) minutes before the advertised performance time. This schedule for house opening will be followed even if the appropriate sound/lighting checks and technical activities have not all been fully completed.
- Start Times. The engagement will start no later than fifteen (15) minutes past publicly announced starting time, except by mutual agreement.
- Georgia Tech may play a prerecorded announcement to advise the audience of safety requirements and to reinforce Georgia Tech photography, cell phone, pager and recording restrictions.
- Late Seating. Audience members arriving late for performances will be seated at the House Managers discretion (typically at an appropriate interval in the program), unless otherwise discussed or determined by Georgia Tech and the client.
- Emergency or Audience Hazard. In the event of an emergency or audience hazard, Georgia Tech shall have the exclusive right to bring up the house lights and/or to take any other action which Georgia Tech, at its sole discretion, deems necessary to assure the audience's comfort and/or safety.
- Collections on Premises. No collections, donations, or solicitations of goods of any kind, whether for charity or otherwise, shall be made or attempted on Georgia Tech premises by the client or its representatives without first obtaining written permission from Georgia Tech.
- The First Center's Box Office is located in the center of the lobby. The First Center uses the Audience View Campus ticketing system and accepts all major credit cards. The Box Office opens sixty minutes before the contractual start time of the event and closes an hour after the listed start time or, after intermission.

## **Technical Equipment and Logistics**

- The Client agrees to work within existing inventory of the theater, as described in the facility's Technical Specifications (below). Including but not limited to: **Soft Goods, Lighting and Special Effect Equipment, Audio and PA systems and Rigging Equipment**. Any additional equipment requested by the Client must be rented from a Vendor by the Client and coordinated with the Production Manager.

## **Equipment Safety**

- The Client shall ensure that all equipment used in its performance shall comply with all applicable OSHA, NEC, NFPA and BOCA regulations and shall be operated in accordance with those standards or, where there are no recognized or local standards, shall be operated in accordance with the best and safest professional practice in the performing arts industry. The Client shall ensure that all scenic units and decorations are effectively flame-proofed and properly certified by an appropriate certificate of flame-proofing. A copy of this certificate shall be forwarded to Georgia Tech prior to the performance.
- Georgia Tech shall retain exclusive rights to determine the location of sound equipment and control boards and to determine acceptable sound pressure and audio quality for all amplified productions in its venues. Final sound quality and volume throughout the performance will be judged by ear by a representative of Georgia Tech rather than by data provided by test equipment.
- Georgia Tech shall have the right to refuse permission for the use and/or operation of any construction, property or effect which in its judgment might endanger artists, audiences, employees, facilities or equipment and, where it deems necessary for reasons of safety, to make necessary modifications and to invoice the Client and obtain immediate payment for the cost of such modifications.
- The Client shall make no alterations, repairs, or improvements to Georgia Tech's theatrical/performance spaces, equipment, rigging, and facilities without Georgia Tech's express written approval, which Georgia Tech may withhold in its sole discretion.

## **Technical Specifications**

- The theater is equipped with a single purchase counterweight fly system with 44 line sets spaced 8 inches apart located on Stage Left with the loading bridge 55 feet above stage level. The arbors are capable of handling up to 1200 lbs. Please refer to the line set schedule in regards to lines that contain orchestra shell clouds and permanent electric raceways. These items are not moveable. There is no walkable grid. Rigging personnel are necessary for any points that need to be rigged from the grid area at the expense of the renter.

## **Stage Dimensions**

- HEIGHT to proscenium 19'6" ft. HEIGHT to grid 60 ft
- Out-trim 53 ft. HEIGHT to loading bridge (SL) 50 ft
- DEPTH to plaster line 34 ft DEPTH to downstage edge 37 ft
- DEPTH to edge of pit 51 ft (When pit is at stage level)
- WIDTH of proscenium 51 ft
- WIDTH wall to wall 80 ft
- SR wing to wall 12 ft
- SL wing to rail 10 ft

## **Specifics of the Stage**

- 34' D backstage wall to plaster line, 52' D with orchestra pit to stage level
- 51'5" W x 19'6" H proscenium opening
- 80' stage width from SR wall to SL fly rail.
- Hydraulic orchestra pit accommodates 45 players, 7' range from stage level, curved lip 52' from stage back wall, portable railing with drape
- 60' fly tower (53' travel) with 44 line sets
- Nonstandard steel fly (not walkable) grid 4' x 12' on center
- Loading bridge 60' from floor SL
- 18' overhead door access to stage right
- 12' overhead door access from 2 truck loading dock
- 1 catwalk lighting position crossovers
- 2 follow spot platforms to the left and right corners of the theater
- Enclosed lighting/projection booth
- House audio mix position at rear, house left center
- Clearcom and Freespeak 2 Wireless intercom system throughout facility

## **Lighting Equipment**

The First Center for the Arts contains a state of the art dimmer per circuit lighting system comprised of 176 ETC Sensor 2.4k dual dimmer modules, an ETC Ion control console and Source 4 instruments. The lighting and audiovisual booth is located center of the house at the rear of the theater approx. 125' from the stage. Spotlight positions are to the extreme left and right of the booth in the corners of the theater accessible by the cat walk system.

## **Instrument Inventory**

- [44] ETC Source Four PARNels (575w)
- [20] ETC Source Four PARS (575w)
- [15] ETC Source Four (575w, 19 degrees)
- [40] ETC Source Four (575w, 26 degrees)
- [45] ETC Source Four (575w, 36 degrees)
- [5] ETC Source Four (575w, 50 degrees)
- [6] Altman Sky Cyc (3 cell, 1k each)
- [2] Lycian Starklite II 1.2k HMI Spotlight

## Hardware

- [42] Side Arms 12" – 18"
- [8] 10' Boom Pipes
- [8] 50 LB Bases
- [8] 4' Pipe extensions with couplers
- 120' of bottom pipe

## Electrical Hookups

- 400a Company Switch, 3phase 208v located downstage right wall
- 100a Audio panel, 3phase 208v located upstage left wall
- 400a Company Transfer Switch, 3 phase 208v located mid-stage right in dock (When in use, this disables circuits 97-192 onstage overhead only. All other circuits are still useable.)

## Audio Equipment

### Front of House Console

- Digico SD9
- Stage Analog I/O: 64 inputs, 16 outputs

### Playback

- Computer: Qlab 4 (Supported audio formats: aac, ac3, aifc, aiff, au caf, mp3, mp4, m4a, sd2, wav)
- CD: Tascam CD-01U

### Line Arrays

- [16] Meyersound M2D (Stereo configuration, [8] elements per side)

### Front Fill

- [4] Meyer M1D (available upon request)

### Subwoofers

- [2] EV XSUB (Dual 18")

### Monitors

- [8] Meyersound MJF-212A

### Wired Microphones

AKG:	Radial/Dis:	Shure: (cont.)
[2] C 414	[8] J48	[2] KSM 32
[3] C 451	Shure:	[5] SM 57
[2] D 112	[1] Beta 52	[8] SM 58
DPA:	[2] Beta 57	[1] SM 81
[3] SC 4098	[4] Beta 58	

### Wireless Microphone System: Shure Axient Digital

#### Transmitters:

- [8] Shure AD2/B58, Handheld
- [8] Shure AD1, Bodypack

#### Bodypack Elements:

- [8] Countryman b6, Lavalier
- [8] Countryman e6, Earset

#### Receivers:

- [2] Shure AD4QUS

## **Mic Stands**

- [10] Tall Boom, Triangle Base, Heavy-Duty
- [4] Tall Boom, Tripod Base
- [2] Short Boom, Round Base
- [3] Short Boom, Tripod Base
- [6] Straight Stand, Round Base
- [4] Tabletop Stand, Round Base
- [3] LP Claw

## **Digital Signal Processing**

- [1] Meyersound Galaxy 408 (Line Array Processing)
- [1] Meyersound Galileo 408 (Subwoofer, Front-Fill Processing)
- [2] BSS BLU-806DA (Zone Processing)

## **Analog / Digital Conversion**

- [1] RME M-32DA PRO
- [1] Focusrite D64R
- [2] Digico Little Red Box

## **Supported Audio Transmission Formats**

MADI: (64x64)

Dante: (64x64)

AES/EBU: (4x4, FOH only)**Video Equipment**

- [1] 24'x15'/339" diagonal – Screen Innovations Zero Edge Pro Slate XL Front Projection Screen Screen (125' throw from booth to screen)
- [1] Barco UDX-4K32 Digital Projector. 31,000 Lumens. Resolution 3,840 x 2,400 (4K UHD) / 2,560 x 1,600 (native). Aspect ratio 16:10. Inputs: 3G SDI input, HDMI, HD Base T, DisplayPort (HD-SDI follows the SMPTE 292M standard, 3G SDI follows the SMPTE 425M standard Level A, 12G-SDI follows the SMPTE ST-2082-1 and ST-2082-10 standards.)

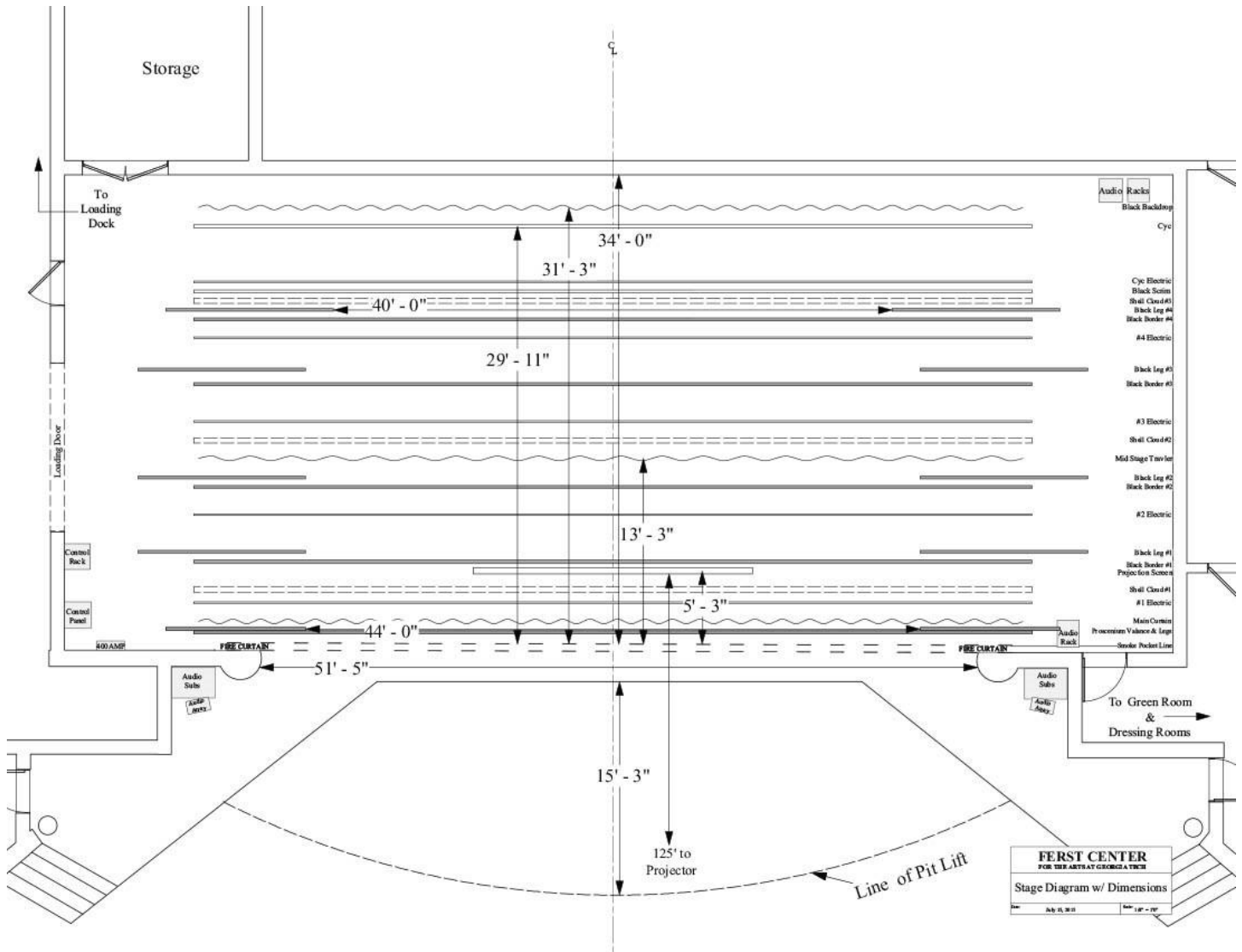
## **Miscellaneous Equipment**

- Steinway Model D 9' Concert Grand piano
- Marley dance floor
- 8 - Wenger Versalite 5000 risers with optional 8", 16" or 24" legs
- Genie GS-2632: Electric Scissor Lift, Yes Drive, DC Power Source, 32 ft Max. Work Height, 500 lb Load Capacity

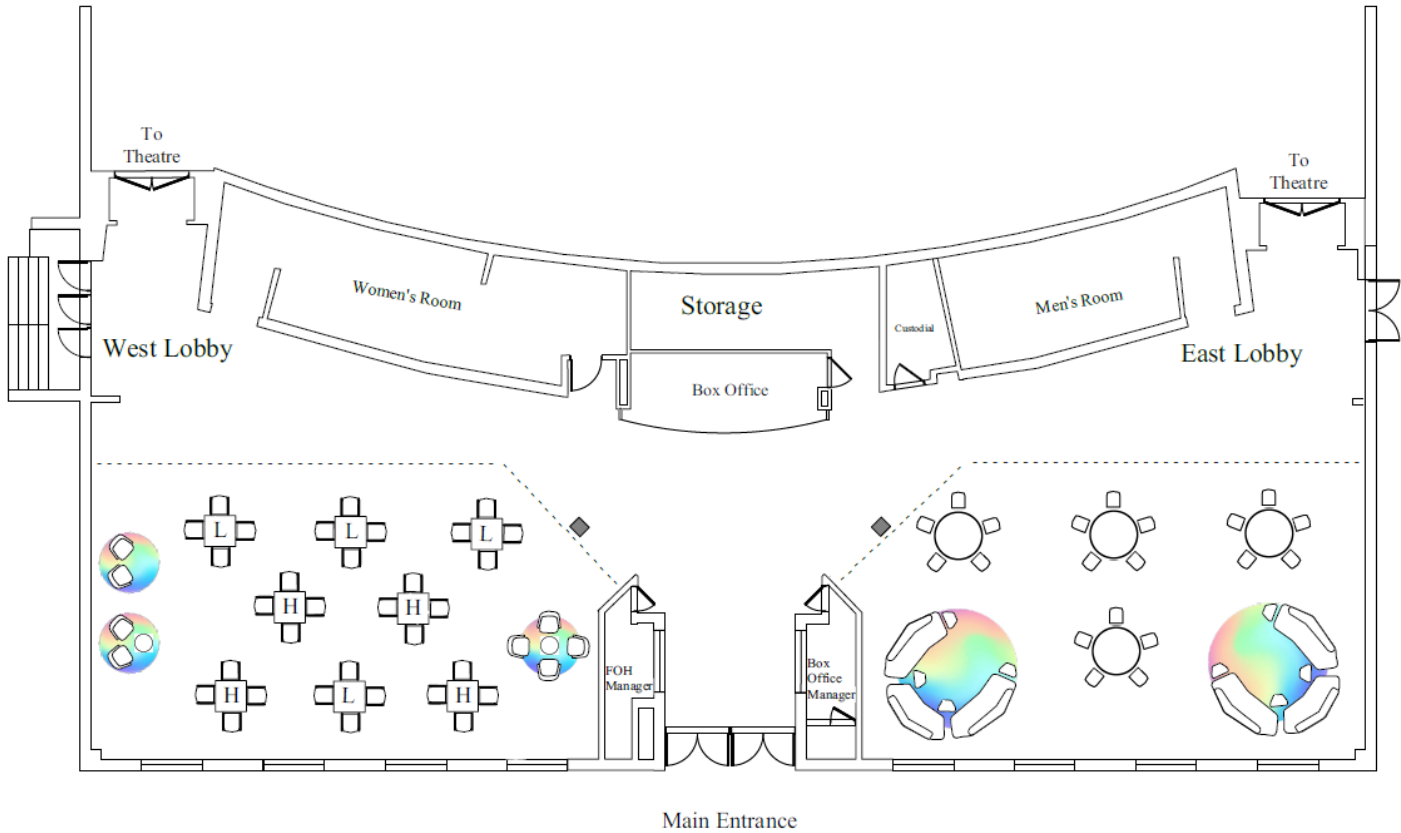
## **Soft Goods**

- [5 pairs] Black Velour Legs: 25oz FLAT 24'H x 12'W
- [4] Black Velour Borders: 25oz FLAT 10'H x 60'W
- [1] Black Sharktooth Scrim: 24'H x 60'W w/ bottom pipe.
- [1] White seamless CYC: 24'H x 60'W w/ bottom pipe.
- [1] Blackout Curtain: 24'H x 60'W 50% fullness,
- [1] Mid-Stage Black Traveler: 24'H x 60'W 50% fullness.
- [1] Grand Drape: 30oz, Deep Bermuda Blue Velour, guillotine only, 26'H x 60'W w 50% fullness
- [1] Valance: 30oz, Deep Bermuda Blue Velour 10'H x 60' W

# STAGE WITH DIMENSIONS



# LOBBY WITH FURNITURE

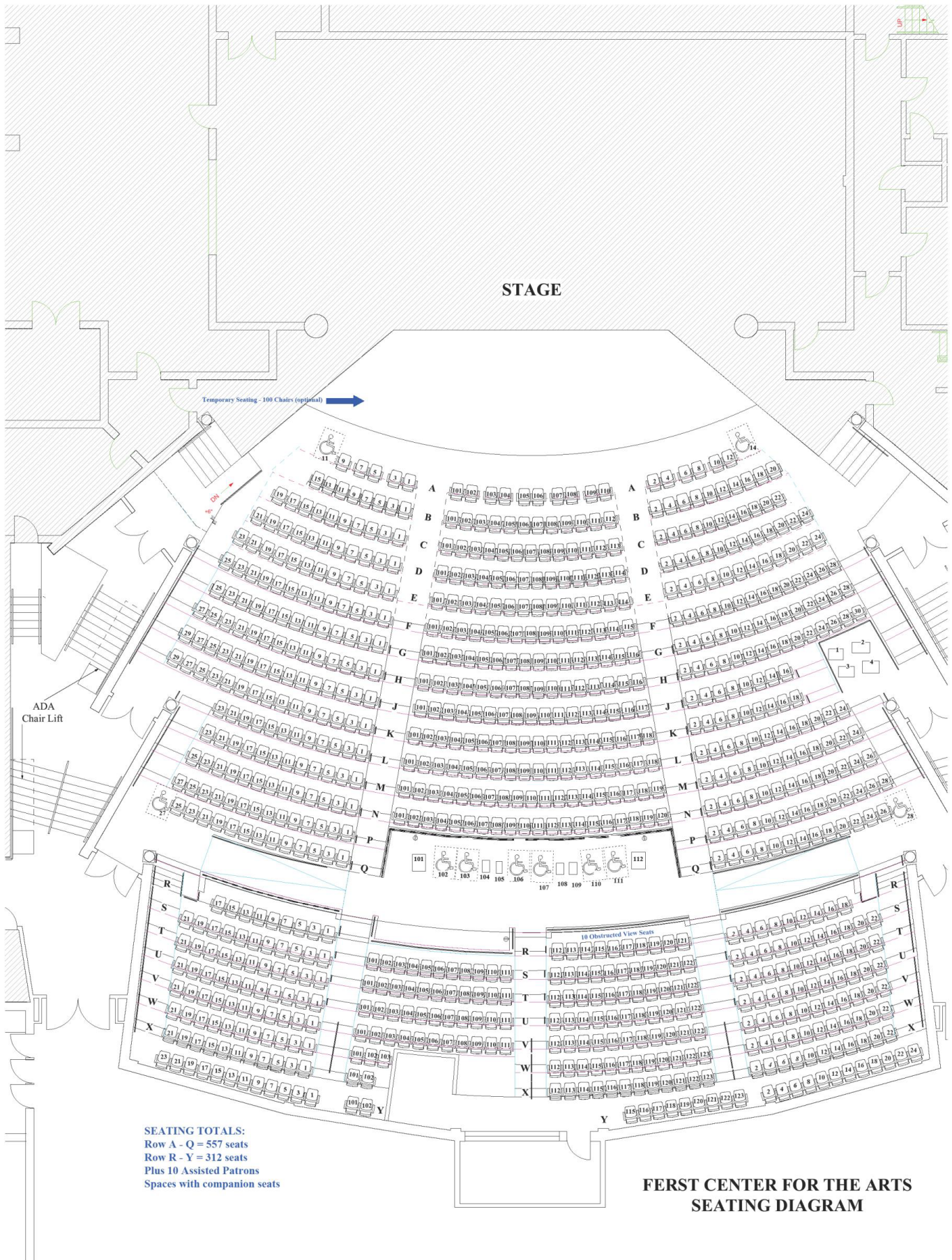


\*On all square tables, please make sure wood grain is following the direction of the floor.  
 \*\* The dashed line indicates the general location of the curtain line.

<b>FERST CENTER</b> FOR THE ARTS AT GEORGIA TECH	
Standard Lobby Diagram	
Date:	September 01, 2019



# SEATING DIAGRAM



SEATING TOTALS:  
 Row A - Q = 557 seats  
 Row R - Y = 312 seats  
 Plus 10 Assisted Patrons  
 Spaces with companion seats

**FERST CENTER FOR THE ARTS  
 SEATING DIAGRAM**