

**Ferst Center for the Arts
Technical Specifications**
(Revised May 2016)

Office of the Arts
Georgia Tech
349 Ferst Drive NW
Atlanta, GA 30332-0468
404-894-9601 Box Office
404-894-2787 Administrative Office

Production and Technical Questions

Theater Operations & Programming Manager: <i>(Arts@Tech events)</i>	Thomas Ames	404-385-2288	Thomas.Ames@arts.gatech.edu
Theater Production Manager: <i>(Rental events)</i>	Paul Cottongim	404-385-1923	Paul.cottongim@arts.gatech.edu

Space Availability and Rental Inquiries

Administrative Assistant:	Dorcas Ford-Jones	404-894-2787	Dorcas.jones@arts.gatech.edu
Theater Client Services Manager:	Ivan Schustak	404-894-2864	Ivan.Schustak@arts.gatech.edu

Office of the Arts Staff

Director:	Madison Cario	404-894-2787	Madison.Cario@arts.gatech.edu
Marketing Specialist/Media Coordinator:	Blake Buford	404-385-4683	Blake.buford@arts.gatech.edu
Assistant Director:	Kathryn Colegrove	404-894-9195	Kathryn.colegrove@arts.gatech.edu
Special Events & Grant Coordinator:	Lane Conville-Canney	404-894-9194	Lane.conville-canney@arts.gatech.edu
Patron & Event Services Coordinator:	Mary Holloway	404-894-9200	Mary.holloway@arts.gatech.edu
Student Engagement Coordinator:	Jennifer Kimball	404-385-4845	Jennifer.kimball@arts.gatech.edu
Marketing & Communications Director:	Stephanie Lee	404-894-9196	Stephanie.Lee@arts.gatech.edu

Space Rental Inquiries can also be made online at <http://arts.gatech.edu/ferstcenter/theatre-rental>

The Ferst Center for the Arts is an 1141 seat multipurpose theatre (1041 fixed, 100 temporary) built in the Spring of 1992 with a proscenium stage, hydraulic orchestra lift, sprung wooden stage floor, and fly tower. The lobby features a box office and a large open space well-suited to accommodate pre-and post-show audiences, and for hosting parties/events.

Technical Specifications

The theatre is equipped with a single purchase counterweight fly system with 44 line sets spaced 8 in. apart located on Stage Left with the loading bridge 55 foot above stage level. The arbors are capable of handling up to 1200 lbs. Please refer to the lineset schedule in regards to lines that contain orchestra shell clouds and permanent electric raceways. These items are not moveable. There is no walkable grid. Rigging personnel are necessary for any points that need to be rigged from the grid area at the expense of the renter.

STAGE DIMENSIONS:

- . HEIGHT to proscenium 19'6" ft. HEIGHT to grid 60 ft
- . Out-trim 53 ft. HEIGHT to loading bridge (SL) 50 ft
- . DEPTH to plaster line 34 ft DEPTH to downstage edge 37 ft
- . DEPTH to edge of pit 51 ft (When pit is at stage level)
- . WIDTH of proscenium 51 ft
- . WIDTH wall to wall 80 ft
- . SR wing to wall 12 ft
- . SL wing to rail 10 ft

Specifics of Main Hall

- . 34' D backstage wall to plaster line, 52' D with orchestra pit to stage level
- . 51'5" W x 19'6" H proscenium opening
- . 80' stage width from SR wall to SL fly rail.
- . Hydraulic orchestra pit accommodates 45 players, 7' range from stage level, curved lip 52' from stage back wall, portable railing with drape
- . 60' fly tower (53' travel) with 40 line sets
- . Nonstandard steel fly grid 4' x 12' on center **(not a walkable grid)**
- . Loading bridge 60' from floor SL
- . 18' overhead door access to stage right
- . 12' overhead door access from 2 truck loading dock
- . 1 catwalk lighting position crossovers, 2 follow spot platforms to the left and right corners of the theatre
- . Enclosed lighting/projection booth
- . House audio mix position at rear, house left center
- . 2 Large dressing rooms downstairs convenient to stage left, with shower and toilet, fixed counters, mirrors, chairs 400/432 sq. ft) Seating for 12 at the counters/mirrors in each dressing room.
- . 1 Large dressing room upstairs with shower and toilet, fixed counters, seating for 12 at the counters/mirrors.
- . Furnished Green Room with outside entrance (250 sq. ft)
- . Laundry facilities with washer/ dryer adjacent to 2nd level dressing room
- . Seating on single inclined level, continental with convenience aisle, wheelchair seating at lobby level
- . Box Office center of Lobby, complete ticketing system with patron info capturing customer reports, accepts cash, checks and credit cards
- . Audio System
- . Clearcom & Telex intercom system throughout facility, wired stations at audio, follow spots, lighting/projection booth, rail, and Stage Manager's panel and an additional 4 wireless units.
- . Lighting system ETC L86 dimmer per circuit, 2762.4kW, ETC Ion console, Source 4 instruments, enclosed booth with sound monitor and intercom
- . 2 Lycian 1272, 1200W HMI Follow spots
- . Company switch, 400a, 3phase 208V for lighting, downstage right
- . Audio panel, 100a, 3phase 208V upstage left
- . 15' x 20' Front projection screen (125' throw from booth)
- . Custom orchestra shell, rear and overhead with lighted clouds
- . Steinway 9' Concert Grand piano
- . Complete soft goods package
- . Marley dance floor
- . 8 - Wenger Versalite 5000 risers with optional 8", 16" legs
- . GENIE Personnel lift AWP30 (30ft maximum extension)

LIGHTING EQUIPMENT

The First Center for the Arts contains a state of the art dimmer per circuit lighting system comprised of 276 ETC Sensor 2.4k dimmers and an ETC Ion control console. The lighting and audiovisual booth is located center of the house at the rear of the theatre approx 125' from the stage. Spotlight positions are to the extreme left and right of the booth in the corners of the theatre, accessible by the catwalk system.

INVENTORY

- | | |
|---|---|
| [44] ETC Source Four PARNels (575w) | [45] ETC Source Four (575w, 36 degrees) |
| [20] ETC Source Four PARS (575w) | [5] ETC Source Four (575w, 50 degrees) |
| [15] ETC Source Four (575w, 19 degrees) | [6] Altman Sky Cyc (3 cell, 1k each) |
| [40] ETC Source Four (575w, 26 degrees) | [2] Lycian Starklite II 1.2k HMI Spotlights |

LIGHTING CONTROL

- [1] ETC Ion

DIMMING

- [176] ETC Sensor 2.4k Dual Dimmer modules

HARDWARE

- | | |
|--------------------------|---|
| [42] Side Arms 12" – 18" | [8] 10' Boom pipe |
| 8] 50lb bases | [8] 4' pipe extensions with couplers; 120' of bottom pipe |

ELECTRICAL HOOKUPS

- 400a Company Switch, 3phase 208v located downstage right wall
- 100a Audio panel, 3phase 208v located upstage left wall
- 400a Company Transfer Switch, 3 phase 208v located midstage right in dock (When in use, this disables circuits 97-192 onstage overhead only. All other circuits are still useable.)

AUDIO INVENTORY

House mixing console – Digico SD9 / CD Playback only audio decks

HOUSE

- | | |
|--|--------------------------------------|
| [2] Meyer M2D speaker line arrays w/ 8 speakers each | [2] Symmetric 501 compressor/limiter |
| [6] Meyer M1D speakers for front fills | [3] Ashly GQX 3102 stereo graphic EQ |
| [2] EVC XSUB subwoofers with dual 18" | [4] Ashly 9651 compressor/expander |
| [8] Myer UM-1C slant monitor | [1] Ashly 9611 Gate |
| [1] Rack EQ KT 8-mix | [3] Ashly 9901 Parametric EQ |
| [1] EVC DX-34A Digital PA Processor – 2 in 4 out | [2] Furman M8-L power conditioner |
| [2] EVC DX-38 Digital Speaker Processor – 2 in 4 out | [1] Tascam CD-150 CD player |
| [2] Yamaha SPX 900 Multi-effect processor | [1] Tascam CD-01U CD player |
| [2] Drawmer DL441 Comp/Limiters (4 channels each) | [3] Yamaha Q2031A Graphic EQ |
| [1] Drawmer DS404 Noise Gate (4 channel) | |

MICROPHONES

- | | |
|--|----------------------|
| [6] Shure wireless beta 58-A | [5] Shure SM98A |
| [6] Shure UR2 wireless packs | [7] AKG 451 |
| [4] Countryman lapel mic for wireless packs | [2] AKG D112 |
| [2] Isomax E6 omni lavalier for wireless packs | [5] EV 408 |
| [2] Shure SM58 | [4] PCC 160 |
| [7] Shure SM57 | [1] Sennheiser e815S |
| [4] Shure SM81 | |

ACCESSORIES

- | | |
|------------------------------------|-----------------------------|
| [2] 25' 12 ch SubSnakes | [2] WHIRLWIND 1x3 splitters |
| [10] Radial J48 | [4] WHIRLWIND 1x2 splitters |
| [4] WHIRLWIND Hotboxes (active DI) | |

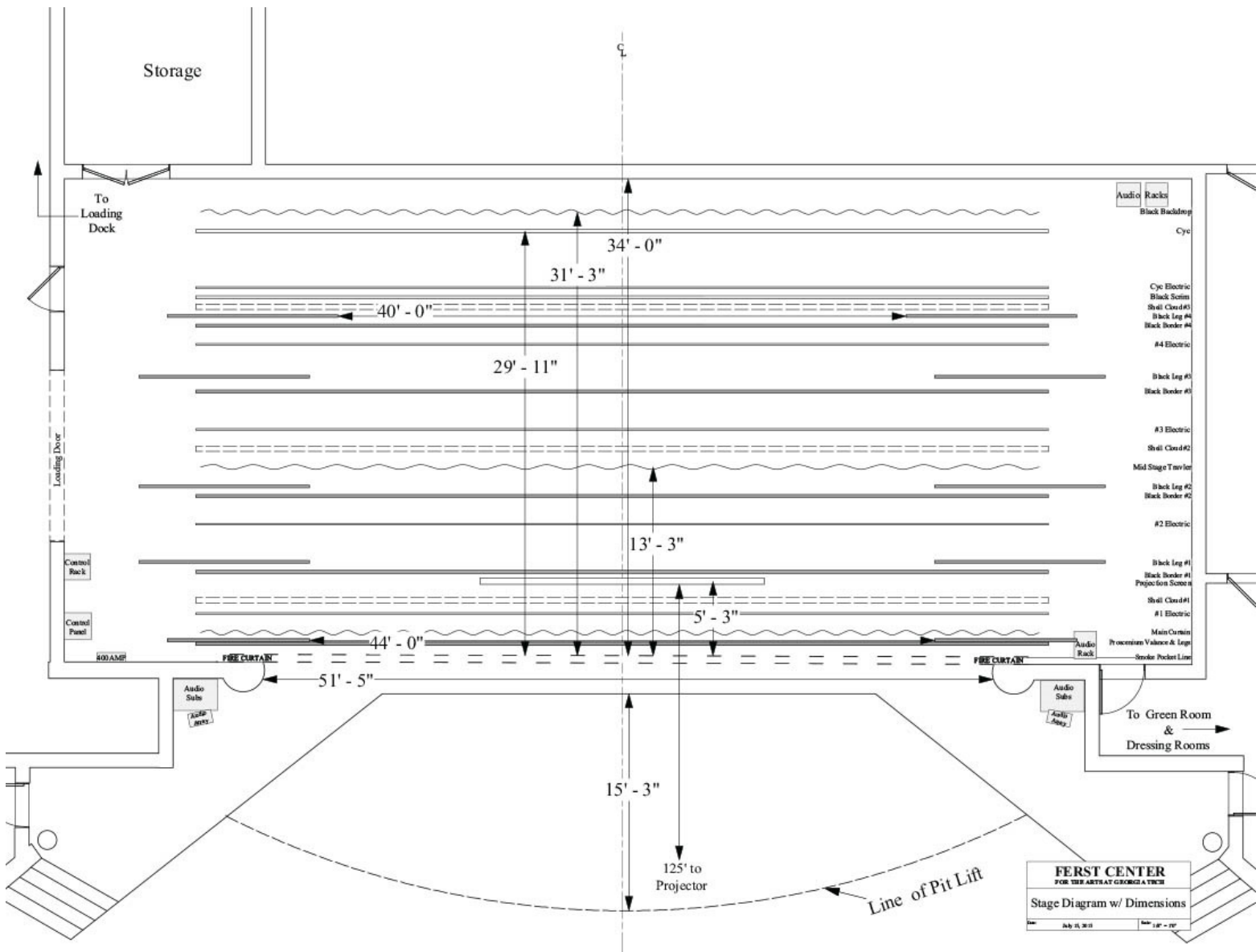
The Ferst Center also carries a supply of mic stands (boom and straight) as well as mic cables.

VIDEO

- [1] Eiki XT9 9000 lumen LCD Projector with long throw lens.
- [1] 20'x15' DaLite Senior Electrol Screen 125' throw from booth to screen

SOFT GOODS

- [5 pair] Black Velour Legs: 25oz FLAT 24'H x 12'W
- [4] Black Velour Borders: 25oz FLAT 10'H x 60'W
- [1] Black Sharktooth Scrim: 24'H x 60'W w/ bottom pipe.
- [1] White seamless CYC: 24'H x 60'W w/ bottom pipe.
- [1] Blackout Curtain: 24'H x 60'W 50% fullness,
- [1] MidStage Black Traveler: 24'H x 60'W 50% fullness.
- [1] Grand Drape: 30oz, Deep Bermuda Blue Velour, guillotine only, 26'H x 60'W w 50% fullness
- [1] Valance: 30oz, Deep Bermuda Blue Velour 10'H x 60' W



Seating Totals:

Row AA - D = 194 seats

Row AA - F = 292 seats

Row AA - J = 438 seats

Row AA - P = 698 seats

Row Q - X = 343 seats

plus space for
10 Wheelchairs

